

Hybrid Series Quick Start Guide

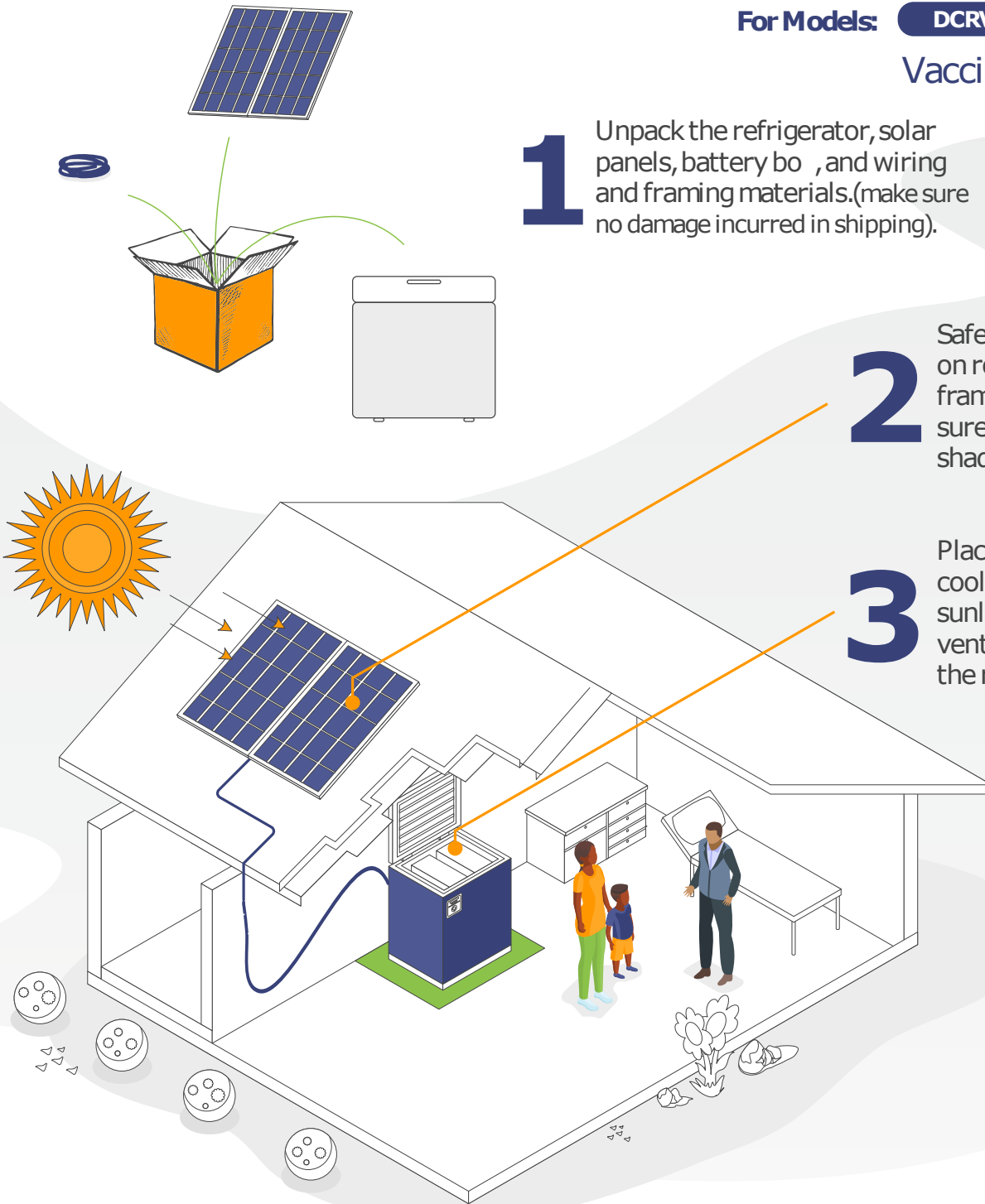
For Models: **DCRV20**

Vaccine refrigerators

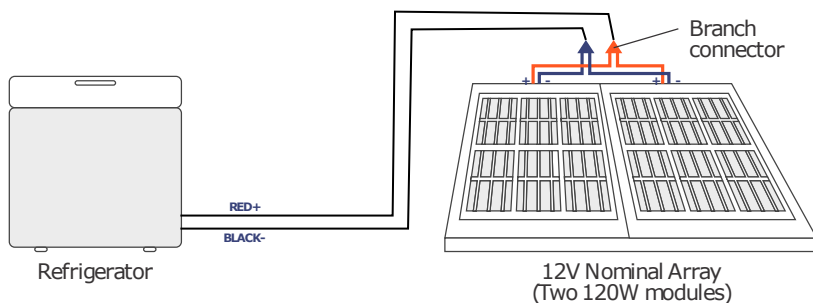
1 Unpack the refrigerator, solar panels, battery box, and wiring and framing materials. (make sure no damage incurred in shipping).

2 Safely install solar panels on roof using supplied framing brackets. Make sure the panels are not shaded.

3 Place refrigerator in a cool location, out of the sunlight, keeping adequate ventilation space between the refrigerator and walls.



4 Using supplied wires, attach solar array to the battery box and the battery box to the refrigerator as shown below. (The solar panels are connected in parallel, not series).



5 Make sure switch is turned on. Wait 2 days before loading refrigerator with vaccines to give time for the refrigerator to get cold and freeze the interior packs.

